

S **STRUCTURAL**
Composite Technologies Ltd
"Engineered for Excellence"

200-100 Hoka St
Winnipeg Manitoba
R2C-3N2
1-888-668-9320

Well casing & lid's



Made in Canada





Overview

Structural Composite Technologies Ltd. (SCTL) is a leading North American supplier of quality composite (FRP) components and assemblies. We serve several industries, including mining, utility, civil infrastructure, corrosion resistant tank industries across North America. In addition we manufacture fiberglass parts and sub assemblies for OEMS and specialty requirements. Structural Composite Technologies Ltd has been in business since 1964. In meeting our customers needs, we operate through three divisions:

Utilities And Infrastructure

- Utility Transformer Pads
- Utility Switching Shelters
- Utility pole Specialty Ground Anchors
- Open Ground Trench Covers
- Cemetery Monument Support Pads
- 24”&30” Water well casing
- Ballistic Resistant Panels
- Trench Covers

O.E.M

- O.E.M Composite Parts
- O.E.M Subassemblies
- (SCTL) manufacturer for Vencho & Echo tubs & showers
Bathware tub and shower enclosures.



Fibreglass Well Casing Advantage

- Light Weight ¼ the weight of steel easy to install
- Require less personnel and equipment for installation
- NSF Approved for pottable water
- Bell and Spigot design for quick easy installation
- Corrosion Resistant inside& out
- Will not rust Crack, or rot.
- Higher Strength to weight Ratio than Steel
- Smooth internal bore resist scale build up and no descaling procedures required
- Heat resistant, fibreglass extremely resistant to heat unlike PVC, and will not be affected during grout installation.
- Deep and shallow applications up to 270ft*

*24" well casing depth 270/30 "up to 190ft heavy casing only.

Independent Test Results

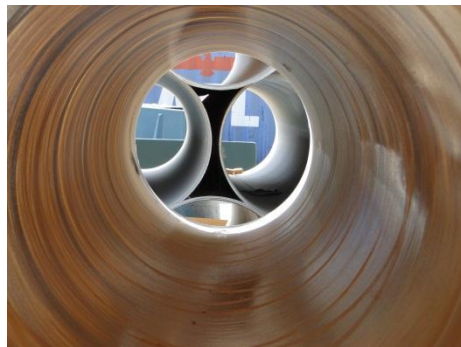
Structural Composite Well casing test results			
1.1. Vertical Test			Leading Competitor results
Table 1: Test Data of Standard 30" Well Casing – Vertical Loading			Fracture load in lb
Specimen Number	Fracture Load, lb		NA
V30N-1	78,571		NA
V30N-2	71,260		NA
V30N-3	65,172		NA
V30N-4	62,753		NA
V30N-5	65,972		NA
Average Values	68,746		
Table 2: Test Data of Heavy Duty 30" Well Casing – Vertical Loading			Fracture load in lb
Specimen Number	Fracture Load, lb		Heavy
V30H-1	138,662		38,000
V30H-2	134,433		36,000
V30H-3	166,332		35,000
V30H-4	121,849		34,800
V30H-5	131,981		33,000
Average Values	138,651lb		35,600lb



Structural Composite Well casing test results			
1.2. Horizontal Test			Leading Competitor results
Table 4: Test Data of Standard 30" Well Casing-Horizontal Loading			Fracture load in lb
Specimen Number	Fracture Load, lb	All Test Results Performed by Independent test lab	NA
H30N-1	3,716	Composite Innovation Centre	NA
H30N-2	3,154		NA
H30N-3	4,361		NA
H30N-4	2,635		NA
H30N-5	2,839		NA
Average Values	3,341lb		NA
Table 5: Test Data of Heavy 30" Well Casing -Horizontal Loading			Fracture load in lb
Specimen Number	Fracture Load, lb		
H30H-1	4,154		840
H30H-2	4,555		850
H30H-3	3,662		925
H30H-4	4,964		1,045
H30H-5	3,635		
Average Values	4,194		915lb

Product features

- Heavy well casing 30" 395lb (175kgs) Min Standard .
- Standard well casing 30"285lb (139kgs)
- 24" standard 254lb (123kgs)
- 17 strand filament design
- Reinforced ribbed design. 3" min Rib
- Food grade resin
- NSF Certified
- Smooth Wall Design
- Two sizes 24"&30"
- 20 foot lengths
- UV Protection
- Corrosion resistant
(no corrosion contamination)
- Custom Colors available*



Common Applications

- Well Casing
- Dewatering
- Soil contamination recovery
- Sump Tanks
- Lift Stations
- Car Wash Pits
- Air release
- Chambers
- Flotation(docks)(cottages)
- Ventilation
- Concrete Forms
- Pipe Tanks
- Valve Switch Station



Filament Winder



**17 Strand Axial Filament Wound
Process ensures for a quality
product.**



CNC Winder



CNC APPLICATION

Premium well casing

24" & 30" Well Casing

Belled reinforced ends for easy connection

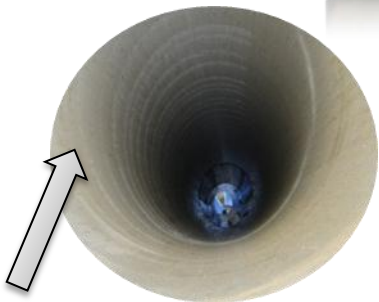
Consistent resin no dry spots on filament.



Reinforced Ribbed Filament Ring. 30" Spacing for Reinforced strength



Man whole sleeve



Smooth wall Design Eliminates contaminates



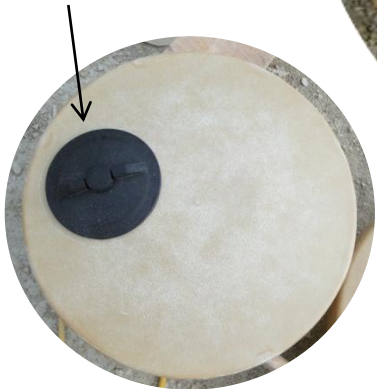
Well casing lids

**Well Casing
lid/cap 24" & 30"**

**Close molded
superior strength**



**Optional
spin off
access
available**



Shipping



**SHIPPING: 30" 22 PER LOAD
24" UP TO 32 PIECES
FLAT DECK FOR EASY
REMOVAL**